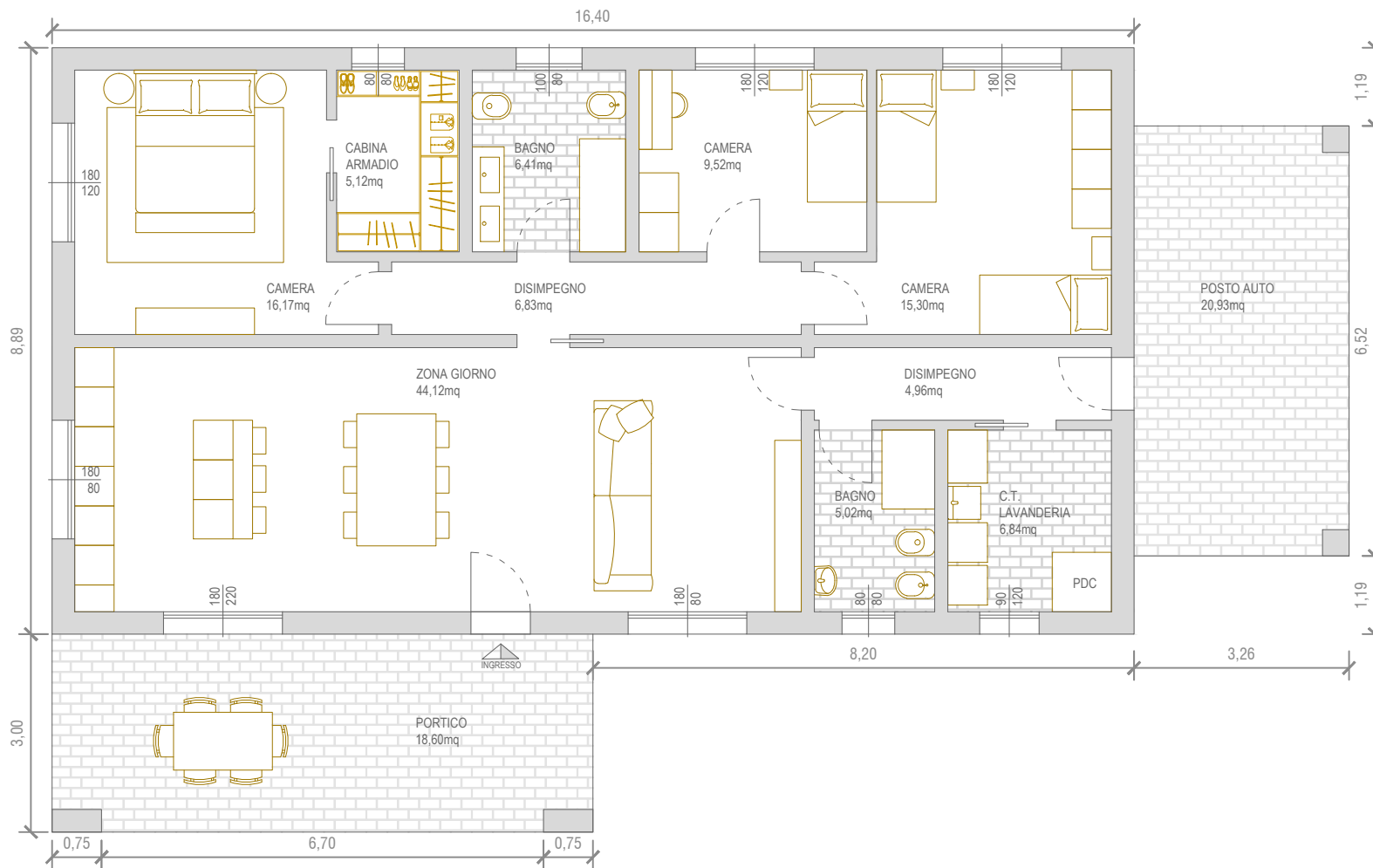


Superficie lorda	p.t.	145,96m <sup>2</sup>	Superficie utile	p.t.	120,29m <sup>2</sup>
	portico	24,60m <sup>2</sup>		portico	24,09m <sup>2</sup>
	posto auto	21,25m <sup>2</sup>		posto auto	20,93m <sup>2</sup>



PIANTA